



- Hydraulic Accessories



- Shell and Tube Coolers



- Air Motors



- Gauges



- Cam and Groove Couplings



- Couplers



- Hydraulic Manifolds



- Flow Meters



- 4 Bolt SAE Flanges



- Cable Connectors



Follow Us on
Social Media!



HYDRAULIC, PNEUMATIC & AUTOMATION COMPONENTS AND SYSTEMS

EST. 1971

For over 50 years Mitten FluidPower has been a full service provider for all your hydraulic, pneumatic, and connector needs with engineering expertise for sub component, full system design, and integration capabilities.

Fluid Connector & Hose Assemblies

Full line of Hoses, Connectors, & Accessories

Tube fabrication equipment & capabilities

Pneumatic Components & Automation

Full line of Pneumatic Valves, Automation, & Air Prep Components

System design & manufacturing capabilities

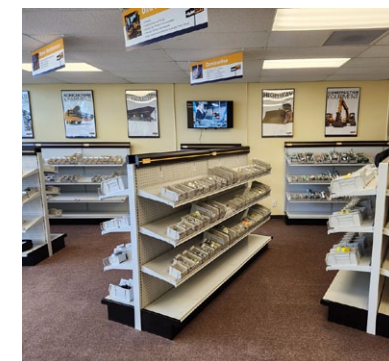
Hydraulic Components & Systems

Full line of Industrial & Mobile Hydraulic Components

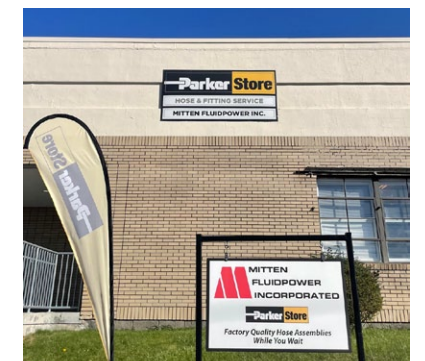
System design & manufacturing: Power Units, Complete Systems



1000 Young St, Suite 490
Tonawanda, NY 14150



650 Mile Crossing Blvd
Suite 2
Rochester, NY 14624



111 Baker St
Syracuse, NY 13206

| 716-551-0885 | www.mittenfluidpower.com | sales@mitten.com | 315-437-7563 |

Hose Products

- Hydraulic, Pneumatics & Gas Hoses
- Pressure Ranges up to 8000 PSI
- Hose Fittings: Crimp, Reusable & Barb
- Hose Crimping Equipment
- Abrasion & Fire Resistance Sleeves



Quick Coupling

- Single Shut-off Pneumatic Couplings
- Double Shut-off & Straight Thru Hydraulic Coupling
- Inline & 90° Live Swivels
- Pressures up to 10,000 PSI



Tube Fittings

- Triple-Lok: 37° Flared Fittings
- Seal-Lok: O-ring Face Seal Fittings
- Ferulok: Compression Fittings
- SAE, NPT & EO Metric Compression Fittings
- Split & Captive Flanges
- Tube Fabrication Equipment



Cylinders

- NFPA Tie Rod
- Mill Style
- Round Body
- ISO
- Switches & Sensors
- Heavy Duty
- Metic



Pumps & Motors

- Gear Pump / Motor
- High Torque
- Low Speed
- LSHT Torqmotors & Nichols Motors



Hydraulic Valves

- Industrial Hydraulic Valve
- Electrohydraulic Motion Controls
- Republic / Manatrol
- Colorflow & Ball Valves



Brass Products

- Push-to-Connect Fittings
- Compression Fittings
- Air Brake Fittings
- Pipe Fittings
- Ball Valves & Needle Valves: Brass, Steel & S.S.



Parflex

- Thermoplastic Hose, Tubing, Fittings & Accessories
- Teflon & Poly Tubing
- High Temperature Hose & Assemblies
- Ultra-High Pressure Hoses up to 50,000 PSI



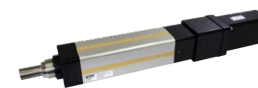
Industrial Hoses

- Rubber & PVC Air Hose Assemblies
- JackHammer Hose Assemblies
- Pressure Washer Hose Assemblies
- Contractor's Water Hoses
- Garden Hoses



Electronic Motion & Control

- Cylinders
- Actuators
- Hoses, Piping, & Tubing
- Motors, Drives, & Controllers



Hydraulic Pump & Power Systems

- Piston Pumps & Motors for Open & Closed Circuits
- Vane, Bent Axis, Power Units & Miniature Pumps
- Compact EHA



Cartridge System

- Threaded Cartridge Valves
- Integrated Hydraulic Products



Pneumatic Components & Automation

Pneumatic Valve

- Air Control valves
- Flow Control & Accessories



Air Preparation Products

- Filters
- Regulators
- Lubricators



Actuator Product

- Cylinders
- Guided Cylinders
- Rotary Actuators



Filtration Products

- Portable Filter Carts
- ParFit Elements & Replacement Units
- Guarded Filtration Units
- Spin-On Filter Assemblies
- Compressed Air Filters
- Trueline Water Filtration Products



Accumulators & Coolers

- Piston, Bladder, Diaphragm, & Coolers
- Pulse Dampeners
- Hydraulic Reservoir Isolators
- Large Volume Gas Bottles

